



A Glimpse of Nonlinear Phenomena from Chua's Oscillator

Leon O. Chua

Philosophical Transactions: Physical Sciences and Engineering, Vol. 353, No. 1701,
Chaotic Behaviour in Electronic Circuits (Oct. 16, 1995), 3-12.

Stable URL:

<http://links.jstor.org/sici?sici=0962-8428%2819951016%29353%3A1701%3C3%3AAGONPF%3E2.0.CO%3B2-N>

Philosophical Transactions: Physical Sciences and Engineering is currently published by The Royal Society.

Your use of the JSTOR archive indicates your acceptance of JSTOR's Terms and Conditions of Use, available at <http://www.jstor.org/about/terms.html>. JSTOR's Terms and Conditions of Use provides, in part, that unless you have obtained prior permission, you may not download an entire issue of a journal or multiple copies of articles, and you may use content in the JSTOR archive only for your personal, non-commercial use.

Please contact the publisher regarding any further use of this work. Publisher contact information may be obtained at <http://www.jstor.org/journals/rsl.html>.

Each copy of any part of a JSTOR transmission must contain the same copyright notice that appears on the screen or printed page of such transmission.

JSTOR is an independent not-for-profit organization dedicated to creating and preserving a digital archive of scholarly journals. For more information regarding JSTOR, please contact jstor-info@umich.edu.

A glimpse of nonlinear phenomena from Chua's oscillator

BY LEON O. CHUA

*Electronics Research Laboratory and Department of Electrical Engineering and
Computer Sciences, University of California, Berkeley, CA 94720, USA*

Chua's oscillator is a simple electronic circuit whose (dimensionless) state equations are given by

$$\begin{aligned}\frac{dx}{dt} &= k\alpha(y - x - f(x)), \\ \frac{dy}{dt} &= k(x - y + z), \\ \frac{dz}{dt} &= k(-\beta y - \gamma z),\end{aligned}$$

where

$$f(x) = bx + \frac{1}{2}(a - b)[|x + 1| - |x - 1|].$$

It consists of two linear resistors, two linear capacitors, one linear inductor and one nonlinear resistor. Chua's circuit (which is Chua's oscillator with $\dot{\gamma} = 0$) can be built using discrete components (figure 1a) or as an integrated circuit (figure 1b). The speed at which the circuit operates can be set by choosing appropriate circuit component values. One of the advantages of Chua's oscillator is that the equations model the dynamical behaviour of the physical system quite accurately. By varying the six parameters ($\alpha, \beta, \gamma, a, b, k$) of Chua's oscillator various nonlinear phenomena such as bifurcations, self-similarity, and chaos can be observed. Many attractors are found in Chua's oscillator by varying the parameters. Figure 2 shows a geometric model of Chua's double-scroll chaotic attractor which is observed in Chua's oscillator. By coupling several Chua's oscillators in an array even more complicated phenomena can be observed. Figure 6a shows spiral waves and target waves interacting in an array of Chua's oscillators. Figure 6b shows a Turing pattern which is observed in an array of Chua's oscillators.

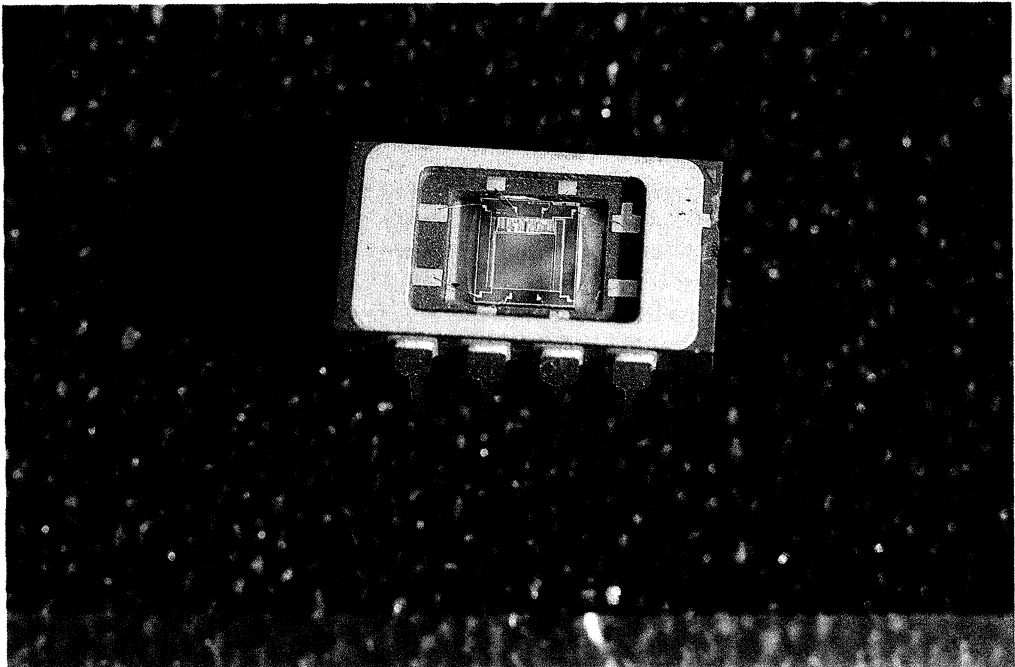
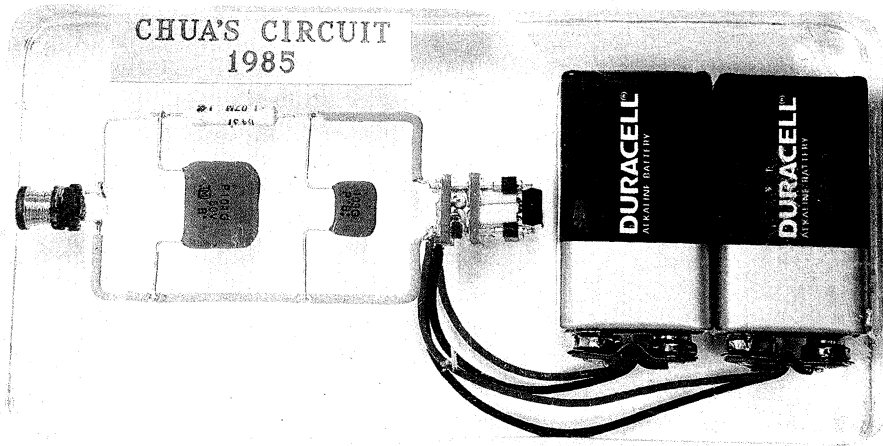


Figure 1. Chua's circuit can be built from discrete electronic components (top), or in a single chip via integrated circuit technology (bottom).

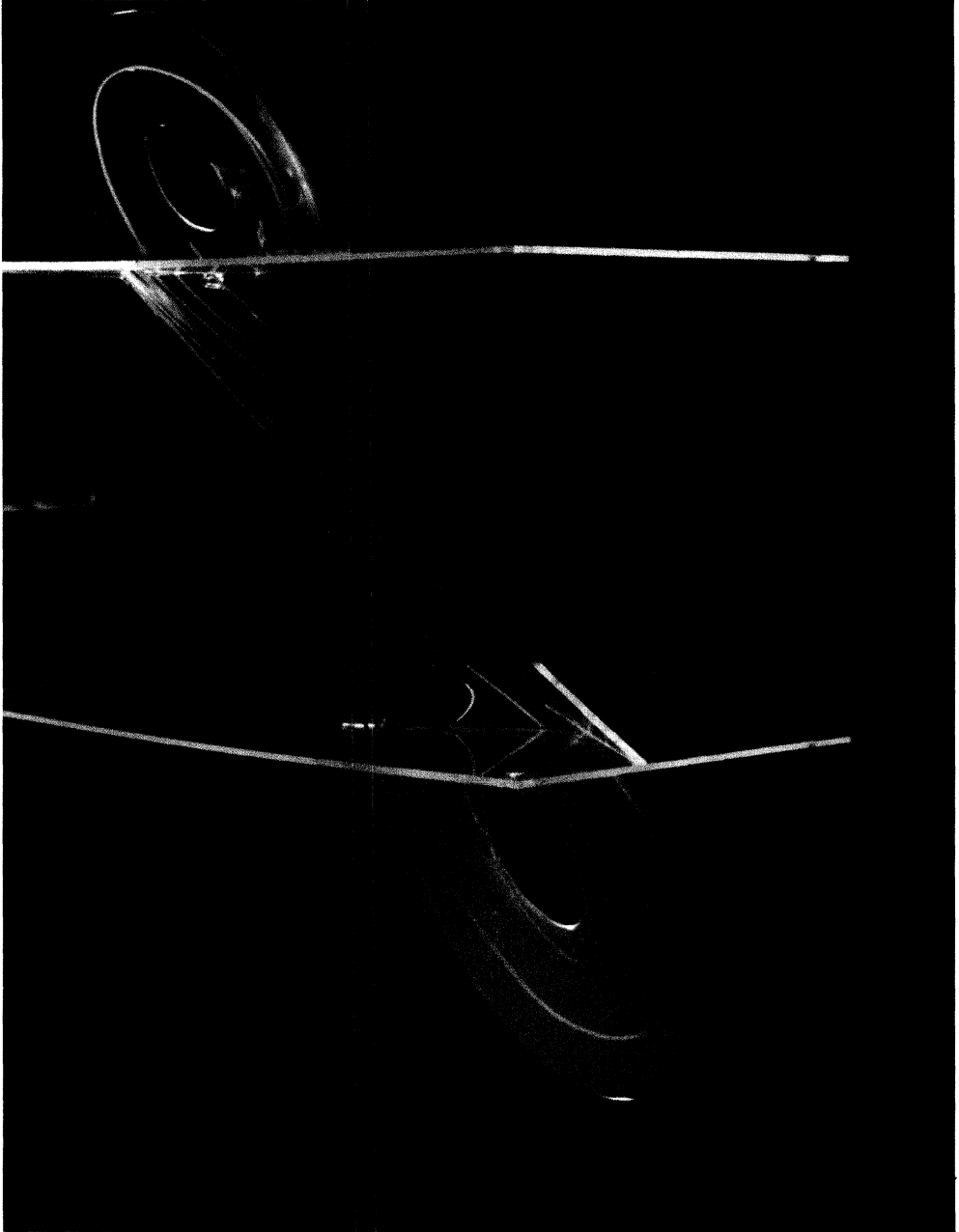


Figure 2. Three-dimensional fibre glass model of Chua's double-scroll attractor.

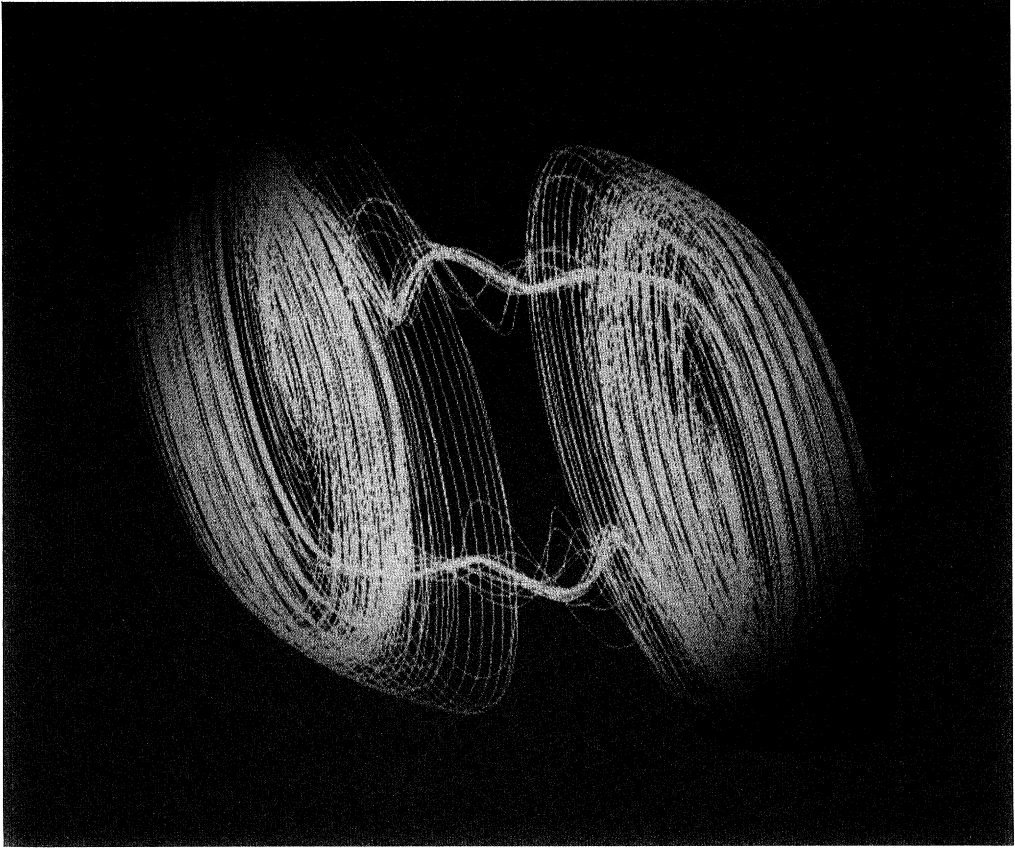


Figure 3. (a) A *strange attractor* from Chua's oscillator observed with the parameters:

α	β	γ	a	b	k
-1.301814	-0.0136073	-0.02969968	0.1690817	-0.4767822	1.0

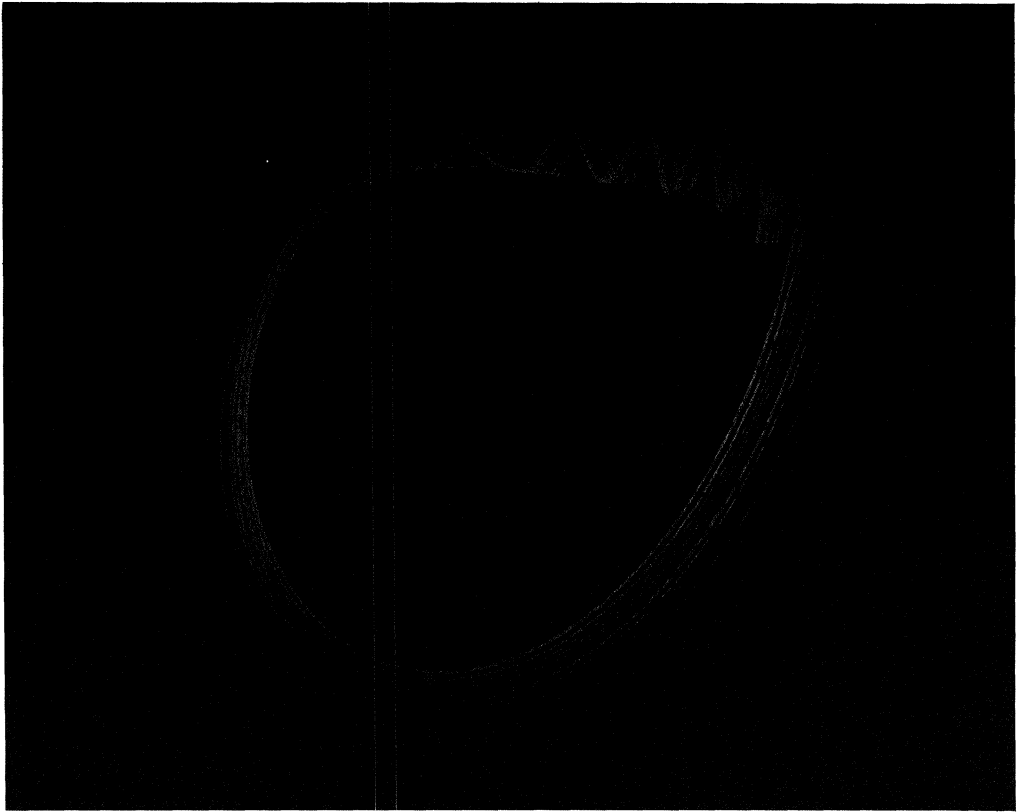


Figure 3. (b) A *strange attractor* from Chua's oscillator observed with the parameters:

α	β	γ	a	b	k
-1.0837792952	0.0000969088	0.0073276247	-0.0941189549	0.0001899298	-1.0

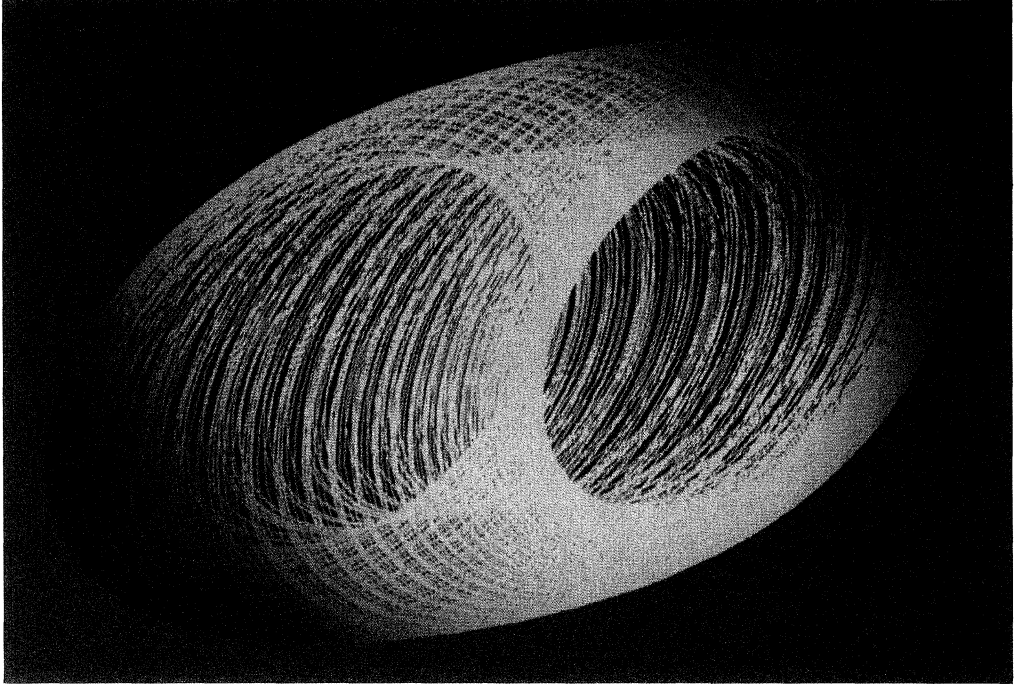


Figure 4. (a) A *strange attractor* from Chua's oscillator observed with the parameters:

α	β	γ	a	b	k
3.505	66.672752	-0.94779892	-0.855372	-1.09956	-1.0

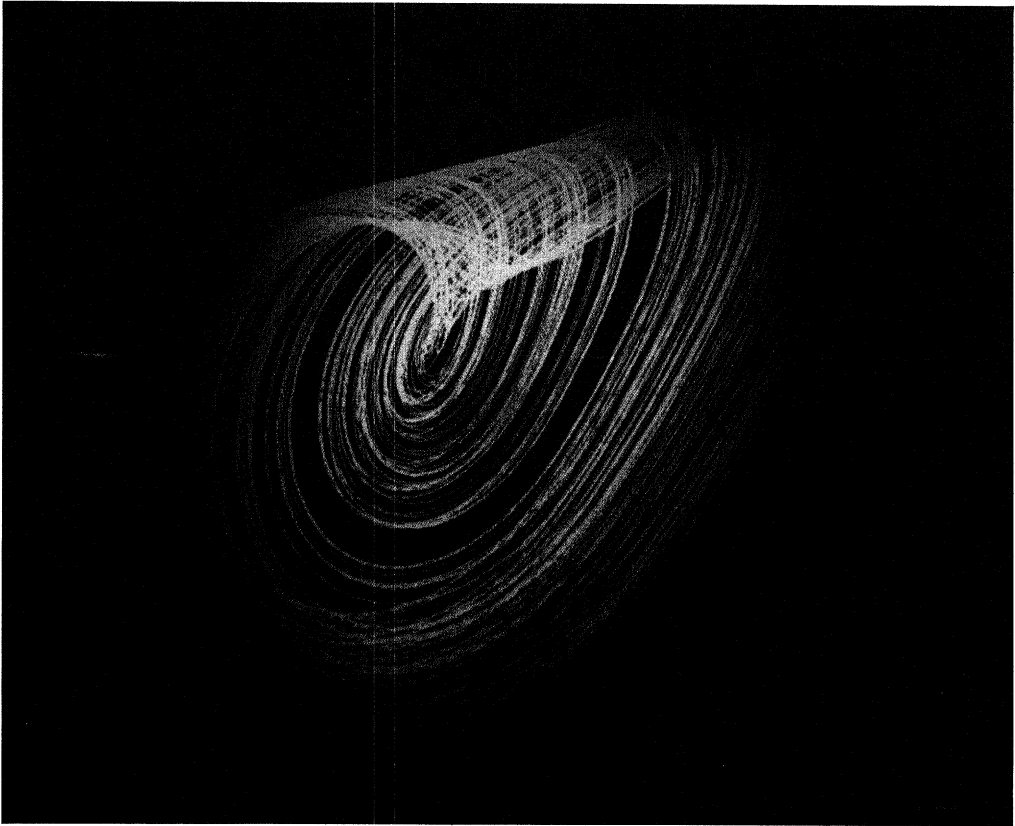


Figure 4. (b) A *strange attractor* from Chua's oscillator observed with the parameters:

α	β	γ	a	b	k
-6.69191	-1.52061	0.0	-1.142857	-0.7142857	1.0

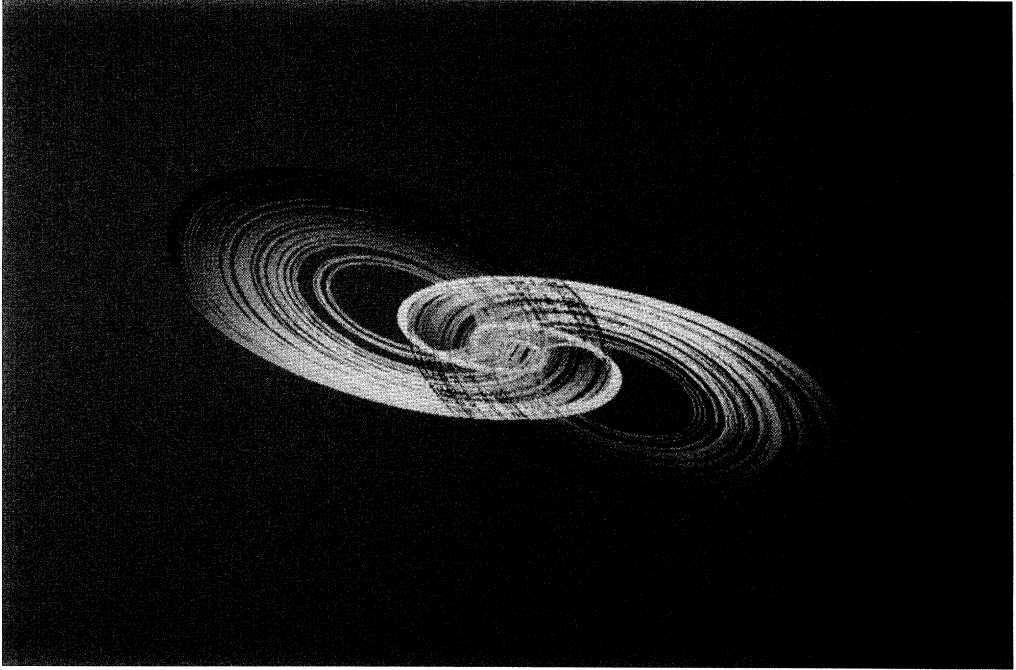


Figure 5. (a) A *strange attractor* from Chua's oscillator observed with the parameters:

α	β	γ	a	b	k
9.3515908493	14.7903198054	0.0160739649	-1.1384111956	-0.7224511209	1.0

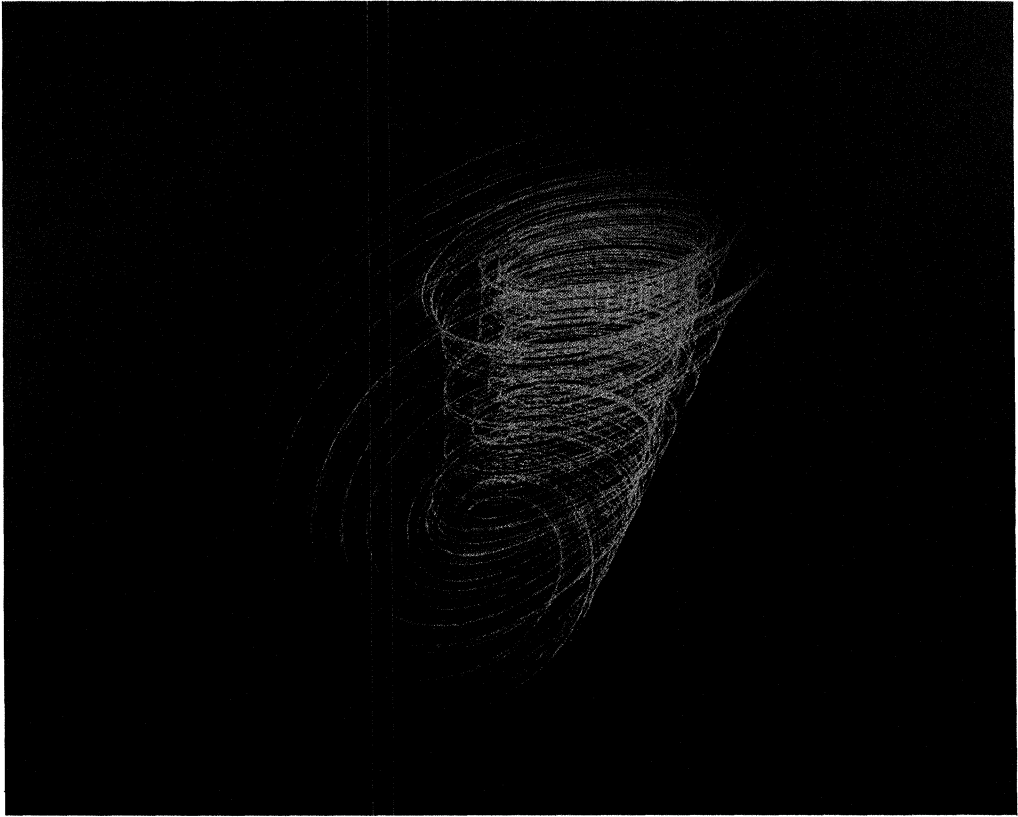


Figure 5. (b) A *strange attractor* from Chua's oscillator observed with the parameters:

α	β	γ	a	b	k
-1.2331692348	0.0072338195	0.0857850567	-0.1767031151	-0.0162669575	-1.0

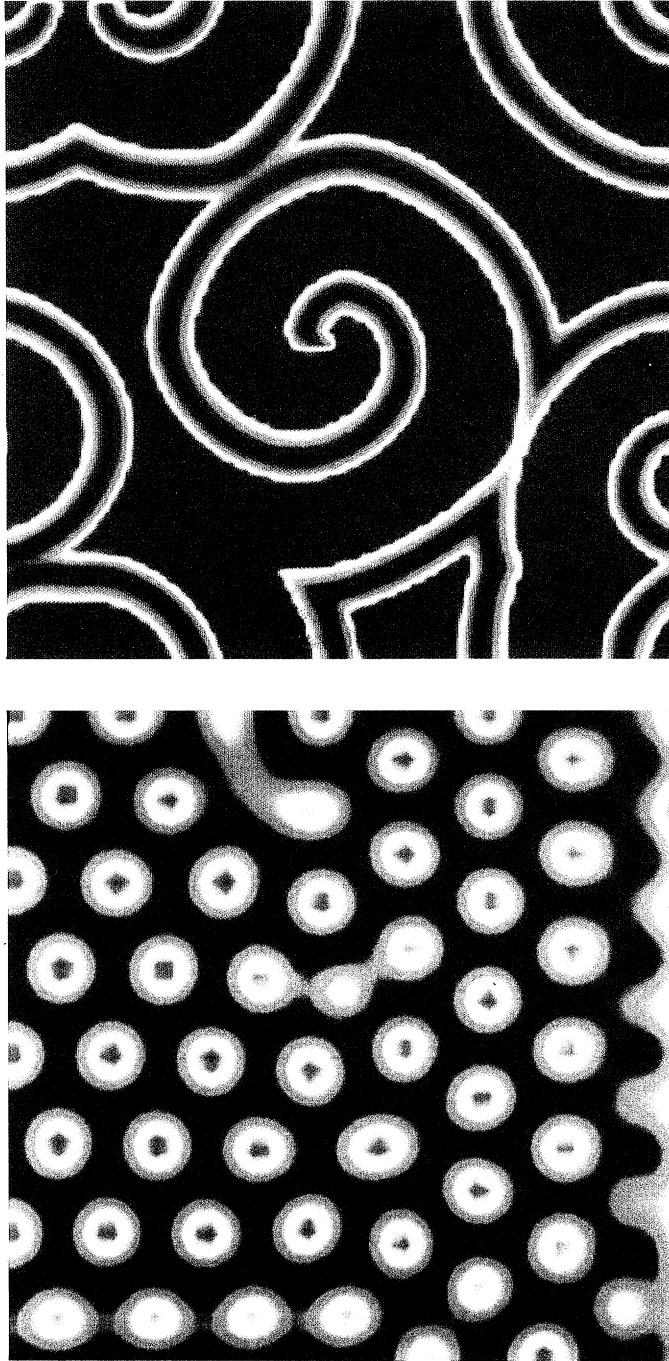


Figure 6. Snapshot depicting the interacting dynamics between *spiral* and *target* waves generated from a cellular neural network made of local interconnections of Chua's oscillators (top). A typical *Turing pattern* generated from an array of Chua's oscillators (bottom).